

## What's New in EFI Metrix

Version 21.2

**Copyright** © 2004 - 2021 by Electronics for Imaging, Inc. All Rights Reserved.

EFI Metrix 21.2 | *What's New in EFI Metrix*

November 2021 / EFI Metrix 21.2

Document Version 1

This publication is protected by copyright, and all rights are reserved. No part of it may be reproduced or transmitted in any form or by any means for any purpose without express prior written consent from Electronics for Imaging, Inc. Information in this document is subject to change without notice and does not represent a commitment on the part of Electronics for Imaging, Inc.

#### **Patents**

This product may be covered by one or more of the following U.S. Patents: 4,716,978, 4,828,056, 4,917,488, 4,941,038, 5,109,241, 5,170,182, 5,212,546, 5,260,878, 5,276,490, 5,278,599, 5,335,040, 5,343,311, 5,398,107, 5,424,754, 5,442,429, 5,459,560, 5,467,446, 5,506,946, 5,517,334, 5,537,516, 5,543,940, 5,553,200, 5,563,689, 5,565,960, 5,583,623, 5,596,416, 5,615,314, 5,619,624, 5,625,712, 5,640,228, 5,666,436, 5,745,657, 5,760,913, 5,799,232, 5,818,645, 5,835,788, 5,859,711, 5,867,179, 5,940,186, 5,959,867, 5,970,174, 5,982,937, 5,995,724, 6,002,795, 6,025,922, 6,035,103, 6,041,200, 6,065,041, 6,112,665, 6,116,707, 6,122,407, 6,134,018, 6,141,120, 6,166,821, 6,173,286, 6,185,335, 6,201,614, 6,215,562, 6,219,155, 6,219,659, 6,222,641, 6,224,048, 6,225,974, 6,226,419, 6,238,105, 6,239,895, 6,256,108, 6,269,190, 6,271,937, 6,278,901, 6,279,009, 6,289,122, 6,292,270, 6,299,063, 6,310,697, 6,321,133, 6,327,047, 6,327,050, 6,327,052, 6,330,071, 6,330,363, 6,331,899, 6,340,975, 6,341,017, 6,341,018, 6,341,307, 6,347,256, 6,348,978, 6,356,359, 6,366,918, 6,369,895, 6,381,036, 6,400,443, 6,429,949, 6,449,393, 6,476,927, 6,490,696, 6,501,565, 6,519,053, 6,539,323, 6,543,871, 6,546,364, 6,549,294, 6,549,300, 6,550,991, 6,552,815, 6,559,958, 6,572,293, 6,590,676, 6,606,165, 6,633,396, 6,636,326, 6,643,317, 6,647,149, 6,657,741, 6,662,199, 6,678,068, 6,707,563, 6,741,262, 6,748,471, 6,753,845, 6,757,436, 6,757,440, 6,778,700, 6,781,596, 6,816,276, 6,825,943, 6,832,865, 6,836,342, RE33,973, RE36,947, D341,131, D406,117, D416,550, D417,864, D419,185, D426,206, D439,851, D444,793.

#### **Trademarks**

The APPS logo, AutoCal, Auto-Count, Balance, Best, the Best logo, BESTColor, BioVu, BioWare, ColorPASS, Colorproof, ColorWise, Command WorkStation, CopyNet, Cretachrom, Cretaprint, the Cretaprint logo, Cretaprinter, Cretaroller, DockNet, Digital StoreFront, DirectSmile, DocBuilder, DocBuilder Pro, DocStream, DSFdesign Studio, Dynamic Wedge, EDOX, EFI, the EFI logo, Electronics For Imaging, Entrac, EPCount, EPPPhoto, EPRegister, EPStatus, Estimate, ExpressPay, Fabrivu, Fast-4, Fiery, the Fiery logo, Fiery Driven, the Fiery Driven logo, Fiery JobFlow, Fiery JobMaster, Fiery Link, Fiery Prints, the Fiery Prints logo, Fiery Spark, FreeForm, Hagen, Inktensity, Inkware, Jetrion, the Jetrion logo, LapNet, Logic, MiniNet, Monarch, MicroPress, OneFlow, Pace, PhotoXposure, PressVu, Printcafe, PrinterSite, PrintFlow, PrintMe, the PrintMe logo, PrintSmith, PrintSmith Site, Printstream, Print to Win, Prograph, PSI, PSI Flexo, Radius, Rastek, the Rastek logo, Remoteproof, RIPChips, RIP-While-Print, Screenproof, SendMe, Sincolor, Splash, Spot-On, TrackNet, UltraPress, UltraTex, UltraVu, UV Series 50, VisualCal, VUTEK, the VUTEK logo, and WebTools are trademarks of Electronics For Imaging, Inc. and/or its wholly owned subsidiaries in the U.S. and/or certain other countries.

All other terms and product names may be trademarks or registered trademarks of their respective owners, and are hereby acknowledged.

## Table of Contents

- Introduction ..... 4**
- Contact Information ..... 4**
- What's New in EFI Metrix 21.2 ..... 5**
  - Redesigned User Preferences Dialog..... 5**
  - New User Role ..... 6**
  - Layout Tooltips ..... 7**
  - Manual Rotation of Irregular Shape Products..... 8**
  - UV Inks for Cutter Alignment Marks..... 9**
  - Copy or Move a Component from One Layout to Another ..... 10**
  - Auto Production with Display Graphics Layouts..... 11**



## Introduction

EFI Metrix is an industry-leading job planning engine that transforms big data into actionable data in the most proven end-to-end integrated solution with a holistic view into manufacturing. With over 1,200 Metrix users in 25 countries and 14 years of continuous, aggressive development, Metrix is recognized as the de facto industry standard for dynamic, intelligent production planning and automated imposition.

### The Complete Planning and Imposition Solution

The EFI Metrix solution stores your presses, finishing equipment, stock, folds, users' logins and permissions, along with your manufacturing standards. Centralizing this information ensures uniformity, efficiency, and ultimately error-free planning and imposition across your entire organization. The EFI Metrix solution automatically and dynamically determines how many press sheets you need, the optimum layout for each press sheet, and even figures out for you the most cost-effective printing method, press, and sheet size.

## Contact Information

### EFI Support

<b>Web Site:</b>	<a href="http://communities.efi.com">communities.efi.com</a>
<b>US Phone:</b>	1.855.EFI.4HLP (1.855.334.4457)
<b>UK Phone:</b>	+44 (0) 800.783.2737
<b>EU Phone:</b>	+49.2102.745.4500
<b>E-Mail:</b>	<a href="mailto:metrix.support@efi.com">metrix.support@efi.com</a>

Metrix Support hours are 8AM CET to 5pm ET Monday – Friday. You may contact support at the above numbers or via our customer portal at [communities.efi.com](http://communities.efi.com).

**Note** For problems involving infrastructure (e.g., computers, networks, operating systems, backup software, printers, third-party software, etc.), contact the appropriate vendor. EFI cannot support these types of issues.

### EFI Professional Services

<b>US Phone:</b>	(651) 365-5321
<b>US Fax:</b>	(651) 365-5334
<b>E-Mail:</b>	<a href="mailto:ProfessionalServicesOperations@efi.com">ProfessionalServicesOperations@efi.com</a>

EFI Professional Services can help you perform EFI software installations, upgrades, and updates. This group can also help you implement, customize, and optimize your EFI software plus offer a range of training options.

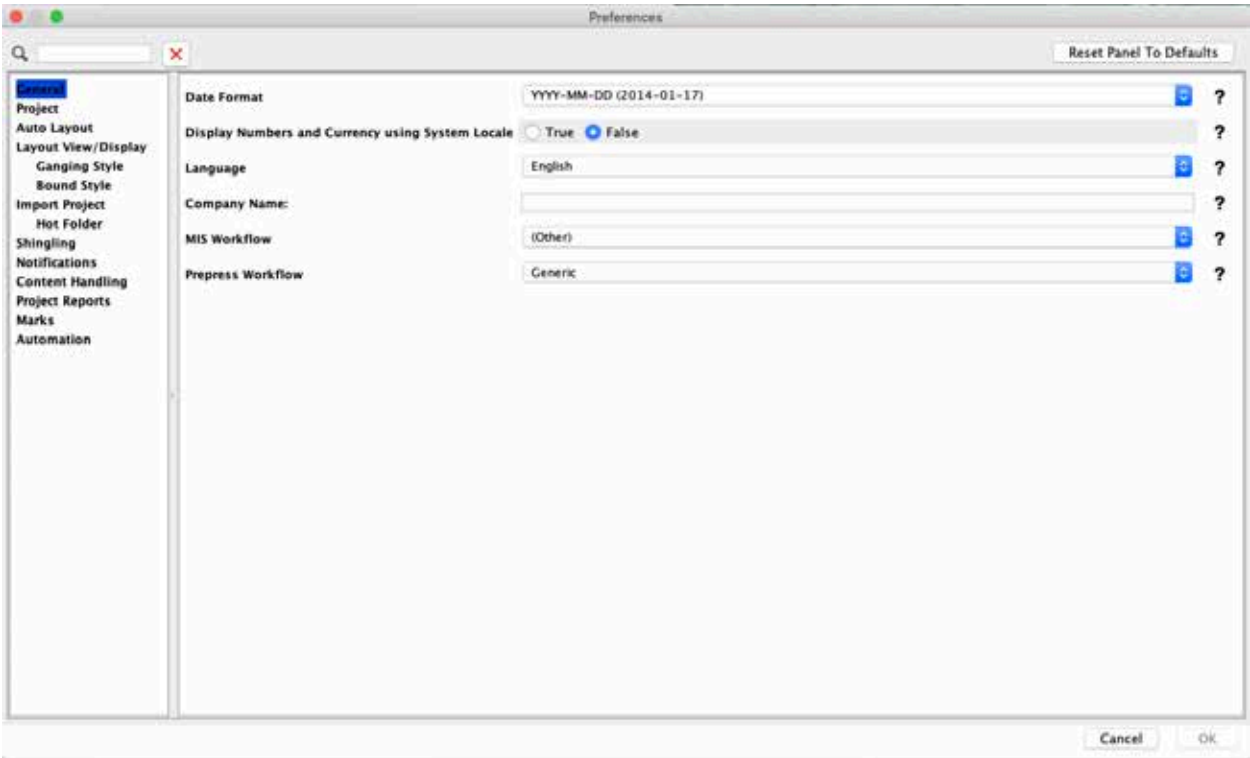
# What's New in EFI Metrix 21.2

This guide introduces you to the new features and enhancements added to Metrix since the release of version 21.1. For more information, see the *EFI Metrix 21.2 User Guide*.

## Redesigned User Preferences Dialog

The User Preferences dialog is redesigned to improve usability. Some preferences were moved to different sections, and some are now stored in the database rather than in a preferences file. A **Search** field was added to help you easily find the preference you want to edit. **Tooltips** and a **Help** button were introduced for each preference to provide a description of its functionality, and a **Reset Panel To Defaults** button lets you restore each panel to its default settings.


To search the User Preferences, enter a search term into the **Search** field, and each tab where the search term can be found will appear in bold. When you select the tab, only the fields that contain the search term will be available.



## New User Role

There is a new User Role, **Can Edit Global Preferences**, available in the database. When set to **True**, a user with this User Role can edit the preferences that apply globally to all Metrix clients. The global preferences are:

- . Company Name
- . MIS Workflow
- . Prepress Workflow
- . Shared Cache Folder
- . How to Handle Unassigned Content When Exporting
- . Enable JDF Color Mapping
- . All Automation preferences:
  - o SMTP Host
  - o SMTP Port
  - o SMTP Account
  - o Password
  - o Email From Address

 New Role
✕

Enter the new Roles properties

 Red properties currently have invalid values

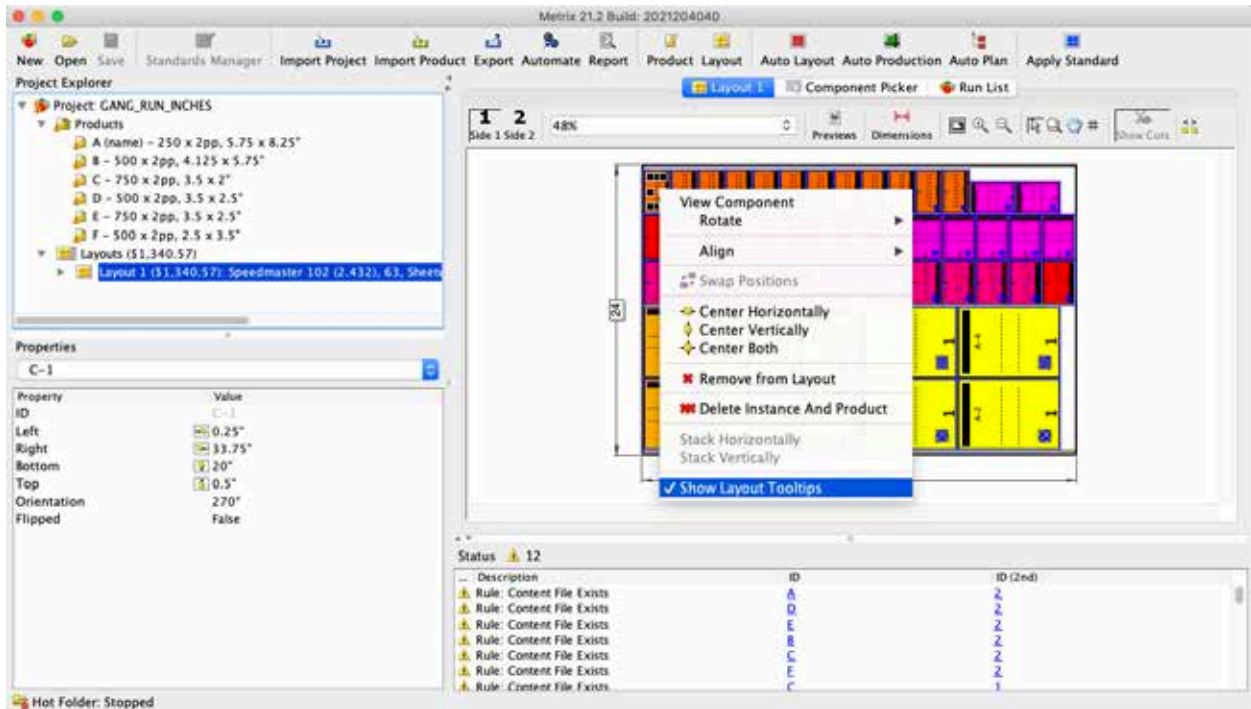
Property	Value
Role Name	
Can Edit a Project	False
Can Create a New Project	False
Can Delete a Project	False
Can Replace an Existing Project	False
Can Import a Project or Product	False
Save, Replace or Delete a Stan...	False
Save, Replace, Import or Delet...	False
Add New Database Items	False
Edit or Delete Database Items	False
Add or Edit Users	False
Add or Edit Roles	False
Export Data	False
Allow Export with Errors	False
Save, Replace, or Delete an Ex...	False
Control Automation	False
Send Project to Metrix Automation	False
Edit Contour Color Name Patterns	False
Can Edit Global Preferences	False

## Layout Tooltips

Metrix 21.2 now displays tooltips for products on layouts so you can easily view the component instance number, product size, and planned color.

To enable Layout Tooltips:

1. Right-click on a component instance on a layout.
2. Select **Show Layout Tooltip** from the contextual menu.

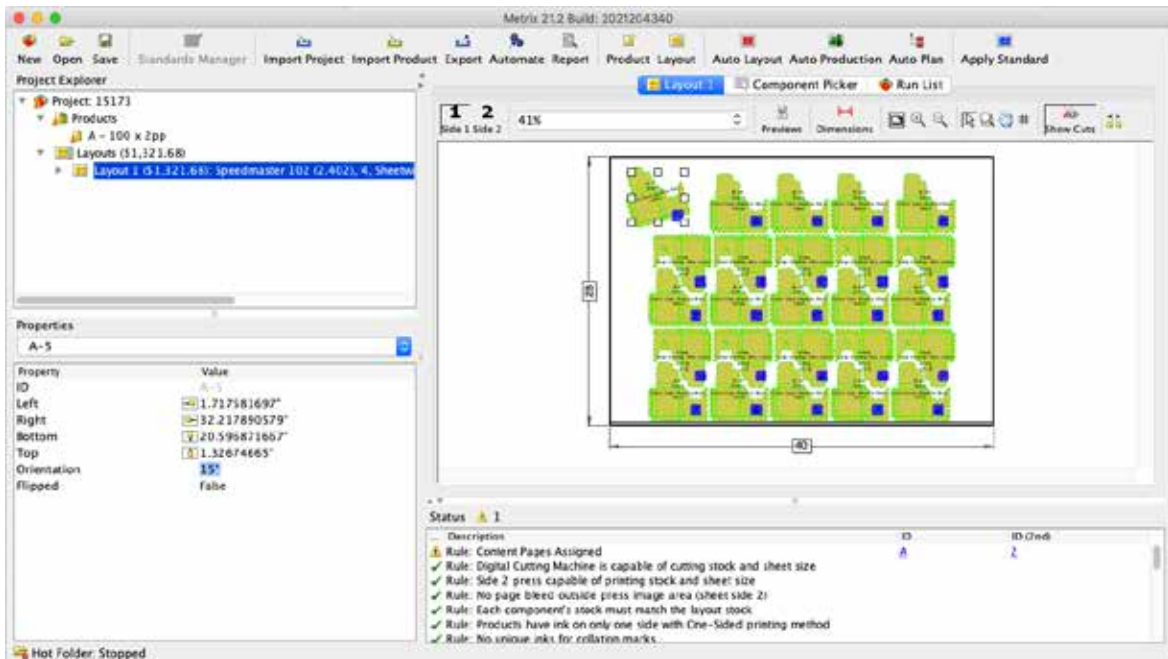


## Manual Rotation of Irregular Shape Products

In Metrix 21.2, you can select a component instance on a layout and specify a specific rotation in one-degree increments. This works only with **Irregular Shape** and **Die-cut** products that are planned without using **Die-cutting Tool Geometry**.

To manually rotate a component instance:

1. Click on a component instance of an **Irregular Shape** product on the layout.
2. Type the desired degree of rotation in the **Orientation** field in the **Properties** panel.



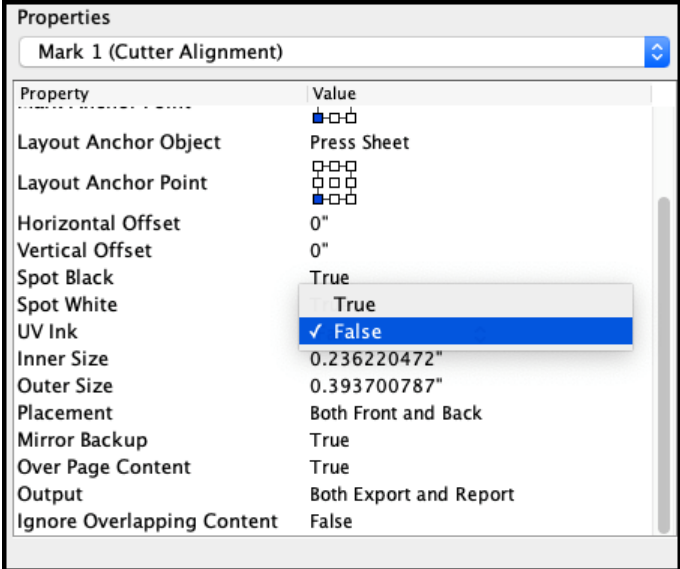


# UV Inks for Cutter Alignment Marks

There is now an option to specify UV inks for Cutter Alignment Marks.

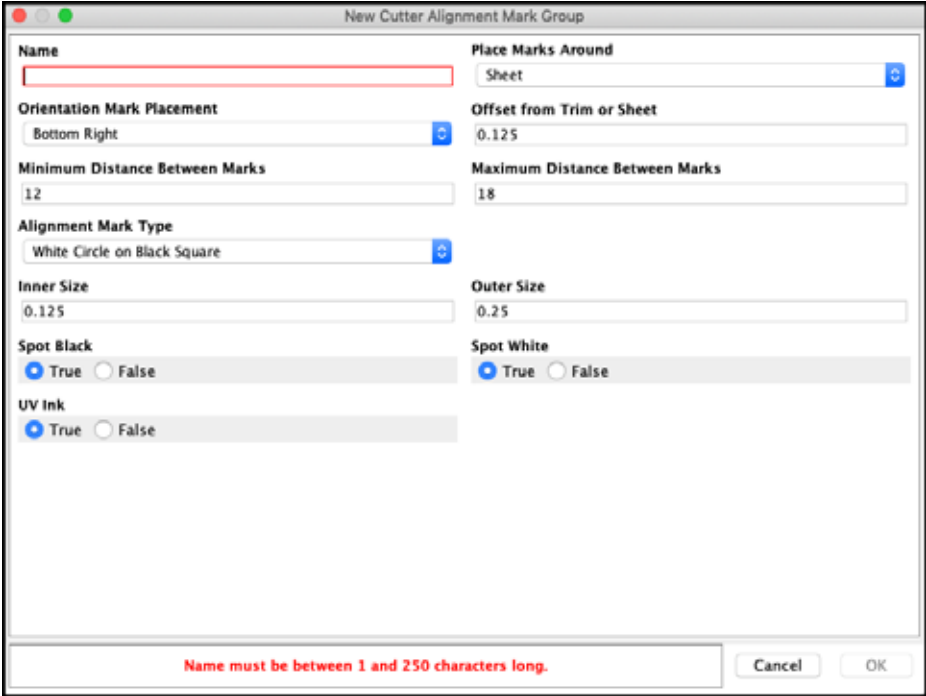
To define UV inks for a Cutter Alignment Mark:

- 1. Add a Cutter Alignment Mark to a layout.
- 2. Verify the mark is selected, and then choose **True** from the **UV Ink** drop-down list in the **Properties** panel.



To define UV inks for a Cutter Alignment Mark Group:

- 1. Add a new Cutter Alignment Mark Group, or select an existing one in the Metrix database.
- 2. Select **True** under **UV Ink**.



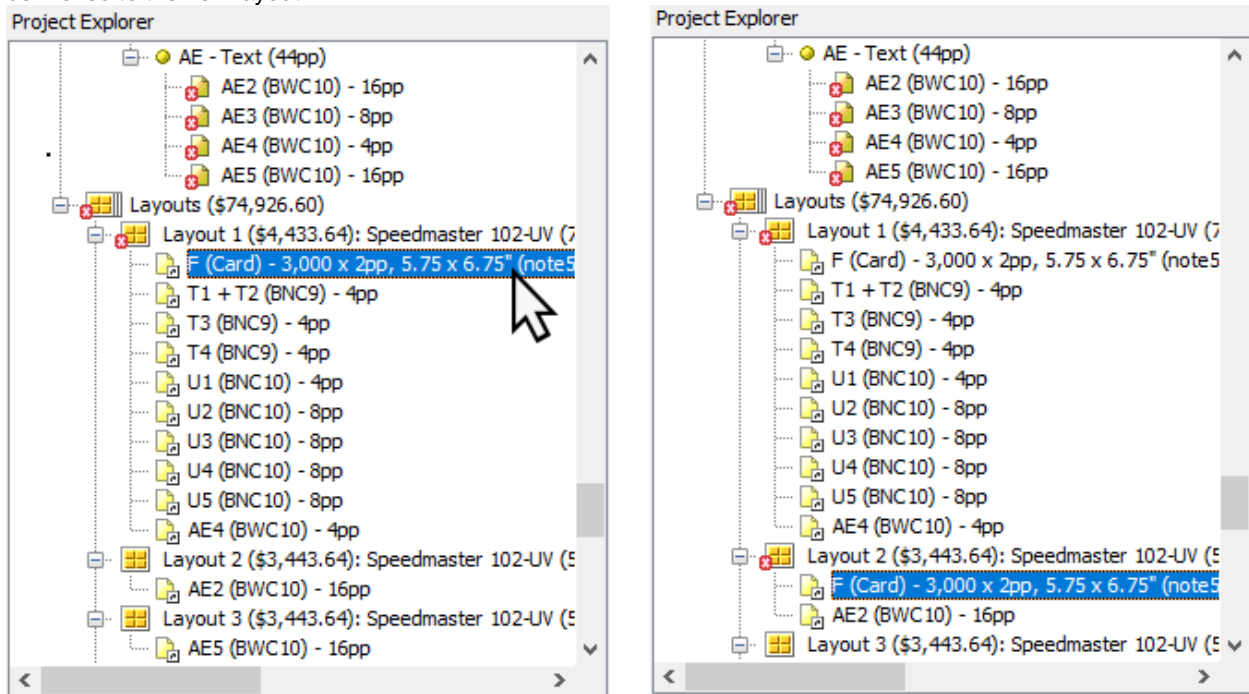
## Copy or Move a Component from One Layout to Another

You can make a copy of a component that is on a layout and add it to another layout in the Project Explorer.

To copy a component from one layout to another:

1. Go to **User Preferences > Auto Layout**.
2. Set **Allow a Component to be on Multiple Layouts** to **True**.
3. Select a component on a layout in the Project Explorer.
4. Hold down the **Alt** (Windows) or **Option** (Mac) key, and drag the component to another layout.

A copy of the component will be added to the layout. If you do not hold down any modifier keys, the component will be moved to the new layout.



## Auto Production with Display Graphics Layouts

Auto Production is now supported for layouts that were planned using the **Display Graphics** algorithm. Only digital presses can be used with **Display Graphics** layouts. If all products have the **Filename** set to "Blank" for one side, you can only use the One-sided Printing Method; if you want to use a two-sided Printing Method for Auto Production, set the **Filename** to "Unassigned" instead.

