

What's new in ACH/X 7.0.0 rev 8714 since ACH/X 6.6.0

New Features

- New Minimum number of channels (available for HiFi output): Automatically reduces number of required primary channels provided spot color accuracy remains within specified tolerance.
- New Multipage document parallel processing: Improves processing speed of Multipages PDFs, available from AlwanColorHub Preferences -> Job Manager for users with a valid URTS (#0001234).
- New Adobe PDF Library APDFL 15.0.4PlusP6f: Fixes font and overprint issues (#0005696, #0006032, #0006135, #0006074, #0006087)
- New PDF 2.0 support: Enables "Use Embedded Black Point Compensation(s)" option (available from Input and Page level Output Intents support).
- MacOS Catalina 10.15 support (MacOS 10.12 will not be supported anymore in the next release).
- New "Clear All History" feature available from AlwanColorHub Preferences -> Advanced.
- New Default Spot Rendering Intent option: Enables to choose between Hybrid or Relative Colorimetric rendering intent when Hifi default rendering intent is set to Relative Colorimetric.

Improvements

- Improved TIFF support: Photoshop tags (Paths and Guides) are now preserved after processing (#0003700).
- TIFF files containing Pantone colors that are not defined in ACH color library end up in JobError folder and do not crash anymore (#0006125).
- Fixes UI to avoid Spot preservation with Gray output profiles (#0006065).
- Fixes Comparator issue with Gray pages (#0005740).
- Fixes Comparator consistency between Windows and mac OS (#0006025).
- PDF report pages thumbnails are now limited to the 9 first pages for ressources and performances purposes, Alwan support can be contacted for customization.
- Fixes wrong warning message ("The software will run in limited mode") displayed at the bottom of the main window, in case of expired URTS (#0006043).

Dongles

Only Black dongles, with a valid URTS (Update and Remote Technical Support Program) are supported. Management of the new dongles must be done using AlwanLicenseManagerX (available from /Applications/Alwan Color Expertise/Utilities/AlwanLicenseManagerX.app)
Old Purple dongles must be upgraded to run ACH/X 6.x.

For more details please contact sales@alwancolor.com.

Note: ACH/X cannot be run in demo mode using time-limited license codes for more than 3 months. After 3 months, it will not be possible anymore to enter any time-limited license to activate the software.

Hardware and System Requirements

Windows:

- Windows 64-bit Operating System required (Microsoft® Windows® 10 Professional, Server 2012 R2, Windows Server 2016)
- Standard or administrator user account.



- Minimum Hardware: Dual Core processor / 8 GB of RAM / 200 GB available hard disc space / 1920x1080 screen resolution.
- Recommended Hardware: Quad-Core processor / 16 GB of RAM / 500 GB available hard disc space (SSD) / 1920x1080 screen resolution.

Mac OS X:

- MacOS 10.12 – 10.13 – 10.14 – 10.15 / Intel processors 64 bit required.
- Standard or administrator user account.
- Minimum Hardware: Dual Core processor / 8 GB of RAM / 200 GB available hard disc space / 1920x1080 screen resolution.
- Recommended Hardware: Quad-Core processor / 16 GB of RAM / 500 GB available hard disc space (SSD) / 1920x1080 screen resolution.

Upgrades

Installing the new ACH/X v7.x will automatically update and restore all settings from ACH/X v6.x or v5.x if it is already installed. No additional operation is needed to upgrade.

Before upgrading, it is recommended to backup your configuration (Admin -> Backup Settings Only...).

This backup will be useful should you downgrade ACH for any reason.

For previous version (3.9.x for instance) please refer to available procedure in

/AlwanColorHubX7xxrevxxxx/Documentations/HowToUpgrade_from_ACH_to_ACHX_rx.pdf.

ACH/X with Enfocus Switch

ACH/X v7.x can be driven by Enfocus Switch 2019 Spring or later, please refer to WF_Switch_WhatsNew_in_ACH_Configurator_v9.pdf for further details.

If you have any questions about existing Switch Flow update, please contact Alwan Support:

support@alwancolor.com

ACH/X with DALiM Basic Tool

Alwan ColorHub 7.x is not supported by Dalim TWIST 7.5.

Dalim TWIST 8.5 support is under progress, for more details please contact support@alwancolor.com .



What's new in ACH/X 6.6.0 rev 8218 since ACH/X 6.5.0

New Features

- New "High Productivity Module (HPM)" (paid option): optimized files for CMY printing on HP Indigo® devices equipped with EPM option
- New Hybrid Colorimetric Rendering Intent: ICC Absolute and Relative Rendering Intents combined for unprecedented color accuracy
- Adobe PDF Library APDFL15.0.4PlusP5c: Improves PDF flattening (#0005702) and fixes some font issues (#0005903)
- MacOS 10.14 support
- v2.1 or v4.0 ICC profiles choice with Hydra Profiling
- Auto clean feature with Enfocus Switch configurator v9, when ACH is driven through WebInterface
- PDF Reports can be generated only on Failures or Warning

Improvements

- Improved rasterization and transparencies support (#0005684, #0005561, #005821)
- Fixed comparator issue with gray pages (#0005740)
- Fixed local rasterization failure under macOS 10.14 (#0005754)
- Improved error message in PDF report when the number of inks to be rasterized is above limits (32) (#0005717)
- Improved Hydra Profiling support to handle negative reflectance values in the measurement file (#0005831)
- Added tooltips information for Output Profile (Separation, Grid Resolution, Creation Date, Creator) and for Inks (Lab, Dot Gain)
- Fixed ink statistic consumption rounding issue for some PDF/X (#0005896)
- Fixed Color Library issue when aliases are missing (#0005917)

Dongles

Only Black dongles, with a valid URTS (Update and Remote Technical Support Program) are supported. Management of the new dongles must be done using AlwanLicenseManagerX (available from /Applications/Alwan Color Expertise/Utilities/AlwanLicenseManagerX.app)
Old Purple dongles must be upgraded to run ACH/X 6.x.

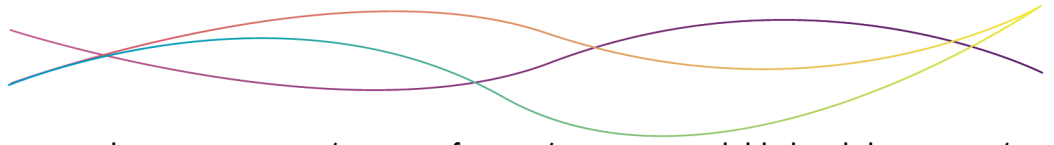
For more details please contact sales@alwancolor.com.

Note: ACH/X cannot be run in demo mode using time-limited license codes for more than 3 months. After 3 months, it will not be possible anymore to enter any time-limited license to activate the software.

Hardware and System Requirements

Windows:

- Windows 64-bit Operating System required (Microsoft® Windows® 10 Professional, Server 2012 R2, Windows Server 2016)
- Standard or administrator user account.
- Minimum Hardware: Dual Core processor / 8 GB of RAM / 200 GB available hard disc space / 1600x900 screen resolution.



- Recommended Hardware: Quad-Core processor / 16 GB of RAM / 400 GB available hard disc space / 1920x1080 screen resolution.

Mac OS X:

- MacOS 10.12 – 10.13 – 10.14 / Intel processors 64 bit required.
- Standard or administrator user account.
- Minimum Hardware: Dual Core processor / 8 GB of RAM / 200 GB available hard disc space / 1600x900 screen resolution.
- Recommended Hardware: Quad-Core processor / 16 GB of RAM / 400 GB available hard disc space / 1920x1080 screen resolution.

Upgrades

Installing the new ACH/X v6.x will automatically update and restore all settings from ACH/X v5.x if it is already installed. No additional operation is needed to upgrade.

Before upgrading, it is recommended to backup your configuration (Admin -> Backup Settings Only...).

This backup will be useful should you downgrade ACH for any reason.

For previous version (3.9.x for instance) please refer to available procedure in

/AlwanColorHubX6xxrevxxxx/Documentations/HowToUpgrade_from_ACH_to_ACHX_rx.pdf.

ACH/X with Enfocus Switch

ACH/X v6.6 can be driven by Enfocus Switch 18 update 3 or later, please refer to WF_Switch_WhatsNew_in_ACH_Configurator_v9.pdf for further details.

If you have any questions about existing Switch Flow update, please contact Alwan Support:

support@alwancolor.com

ACH/X with DALiM Basic Tool

Alwan ColorHub 6.x is compatible with Dalim Twist 7.5 (since build 5068) Basic tool.



What's new in ACH/X 6.5.0 rev 7562 since ACH/X 6.1.0

New Features

- New Minimum TAC and Ink Usage (MTIU) option available in Alwan ColorHub ECO: Ink Saving Boost feature for CMYK separation offers greater ink savings than Dynamic Maximum Black (DMB)
- New K Start and K Max settings available within Minimum TAC and Ink Usage (MTIU) option improving Black channel control
- $\Delta E2000$ calculation option available from Output -> Advanced -> DVLP Generation Parameters -> ΔE Mode = $\Delta E2000$: Improved color accuracy, higher ink savings with MTIU separation
- Adobe PDF Library APDFLv15.0.4PlusP4a: Fixes some font issues (#0001314, #0005514, #0003591)
- Alwan PrintStandardizer TRCA Synchronization information: Current TRCA date and time is displayed in Output -> TRC Adjustment tab

Improvements

- Fixes Scratch custom folder issue, which could be reset to default value when closing ACH (#0005560)
- Improved Shading support (reversed Decode array) during local flattening (#0005669)
- Fixes RGB rounding issue when using Output -> Spot and Special -> Device Color Transformation (#0005536)
- Processing Speed improvements (#0005547)
- HiFi profile generation is quicker and can be processed on different cores
- Improved management of temporary files when processing multi-pages PDFs (#0005522)
- Fixes Switch Configurator issue: when canceling the External Editor, some values were reset to default values (#0005321)
- Fixes Dongle warning message "SafeNet dongle encountered a problem (error code:27)" (#0005541)
- Fixes processing freeze issues during flattening (#0005569) and during file saving (#0005695) with some PDFs having hundreds of thousands vectors.

Dongles

Only Black dongles, with a valid URTS (Update and Remote Technical Support Program) are supported.

Management of the new dongles must be done using AlwanLicenseManagerX (available from /Applications/Alwan Color Expertise/Utilities/AlwanLicenseManagerX.app)

Old Purple dongles must be upgraded to run ACH/X 6.x.

For more details please contact sales@alwancolor.com.

Note: ACH/X cannot be run in demo mode using time-limited license codes for more than 3 months. After 3 months, it will not be possible anymore to enter any time-limited license to activate the software.

Hardware and System Requirements

Windows:

- Windows 64-bit Operating System required (Microsoft® Windows® 10 Professional, 8 Professional, 7 Professional, Windows Server 2008 R2, Server 2012 R2, Windows Server 2016)
- Standard or administrator user account.
- Minimum Hardware: Dual Core processor / 8 GB of RAM / 200 GB available hard disc space / 1600x900 screen resolution.



- Recommended Hardware: Quad-Core processor / 16 GB of RAM / 400 GB available hard disc space / 1920x1080 screen resolution.

Mac OS X:

- Mac OS X 10.10 –10.11–10.12 – 10.13 / Intel processors 64 bit required.
- Standard or administrator user account.
- Minimum Hardware: Dual Core processor / 8 GB of RAM / 200 GB available hard disc space / 1600x900 screen resolution.
- Recommended Hardware: Quad-Core processor / 16 GB of RAM / 400 GB available hard disc space / 1920x1080 screen resolution.

Upgrades

Installing the new ACH/X v6.x will automatically update and restore all settings from ACH/X v5.x if it is already installed. No additional operation is needed to upgrade.

Before upgrading, it is recommended to backup your configuration (Admin -> Backup Settings Only...).

This backup will be useful should you downgrade ACH for any reason.

For previous version (3.9.x for instance) please refer to available procedure in

/AlwanColorHubX6xxrevxxxx/Documentations/HowToUpgrade_from_ACH_to_ACHX_rx.pdf.

ACH/X with Enfocus Switch

ACH/X v6 can be driven by Enfocus Switch 13 update 1 or later, please refer to WF_Switch_WhatsNew_in_ACH_Configurator_v7.pdf for further details.

If you have any questions about existing Switch Flow update, please contact Alwan Support:

support@alwancolor.com

ACH/X with DALiM Basic Tool

Alwan ColorHub 6.x is compatible with Dalim Twist 7.5 (since build 5068) Basic tool.



What's new in ACH/X 6.1.0 rev 7005 since ACH/X 6.0.0

New Features

- Adobe PDF Library APDFL15.0.4PlusP2z: Improves PDF flattening and fixes some font issues (#0001494, #0003388, #0003777, #0005232, #0005244, #0005268, #0005342, #0005394)
- Convert spot if $\Delta E_{00} \leq x$: Automatically convert Spot Color to output ICC profile if predicted color reproduction is within $x \Delta E$ (#0005227)
- Windows Server 2016 Support (#0005371)
- MacOS High Sierra 10.13 Support (Mac OS X 10.9 is not supported anymore)
- New 300% solid preservation in Purities (#0004606)

Improvements

- Improved Hifi separation when using "Priority to CMYK Inks" policy: better gamut mapping color accuracy, fixes posterization issues and improved smoothness (#0005109, #0004959), improved deviceLink creation speed (#0005235)
- Spot definition in Color Library has priority over Spot and Special options (#0005281)
- Fixes PDF reports issue under OS X, texts were made of paths instead of fonts (#0005187)
- Improved bigtiff files support (#0004720)
- Prevent rasterisation resolution decrease when pdf size is more than 2 GB (#0005353)
- Fixes "failed to process (...) failure to establish a communication channel" error that may happen under some OS X configurations with hundreds of queues (#0005233)
- Color Library is included in ACH Task settings, when Spot definition is set to "Prefer Color Library Spot Definition" option (#0005032)
- Fixes Spot color and transparency issue with Local Rasterization (#0005298)
- Improved Backup restoration speed
- Fixes Backup size issue with "Backup Settings Only..."
- Improved JPEG2000 handling (#0005296)
- Updated default settings: General Purpose GCR, Local Rasterization of Overprints Sensitive Elements and Complex Transparencies, Use RGB Embedded Profile(s)

Dongles

Only Black dongles, with a valid URTS (Update and Remote Technical Support Program) are supported.

Management of the new dongles must be done using AlwanLicenseManagerX (available from /Applications/Alwan Color Expertise/Utilities/AlwanLicenseManagerX.app)

Old Purple dongles must be upgraded to run ACH/X 6.x.

For more details please contact sales@alwancolor.com.

Note: ACH/X cannot be run in demo mode using time-limited license codes for more than 3 months. After 3 months, it will not be possible anymore to enter any time-limited license to activate the software.

Hardware and System Requirements

Windows:

- Windows 64-bit Operating System required (Microsoft® Windows® 10 Professional, 8 Professional, 7 Professional, Windows Server 2008 R2, Server 2012 R2, Windows Server 2016)
- Standard or administrator user account.



- Minimum Hardware: Dual Core processor / 8 GB of RAM / 200 GB available hard disc space / 1600x900 screen resolution.
- Recommended Hardware: Quad-Core processor / 16 GB of RAM / 400 GB available hard disc space / 1920x1080 screen resolution.

Mac OS X:

- Mac OS X 10.10 – 10.11 – 10.12 – 10.13 / Intel processors 64 bit required.
- Standard or administrator user account.
- Minimum Hardware: Dual Core processor / 8 GB of RAM / 200 GB available hard disc space / 1600x900 screen resolution.
- Recommended Hardware: Quad-Core processor / 16 GB of RAM / 400 GB available hard disc space / 1920x1080 screen resolution.

Upgrades

Installing the new ACH/X v6.x will automatically update and restore all settings from ACH/X v5.x if it is already installed. No additional operation is needed to upgrade.

Before upgrading, it is recommended to backup your configuration (Admin -> Backup Settings Only...).

This backup will be useful should you downgrade ACH for any reason.

For previous version (3.9.x for instance) please refer to available procedure in

/AlwanColorHubX6xxrevxxxx/Documentations/HowToUpgrade_from_ACH_to_ACHX_rx.pdf.

ACH/X with Enfocus Switch

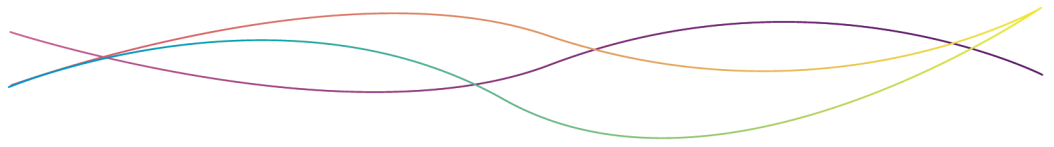
ACH/X v6 can be driven by Enfocus Switch 13 update 1 or later, please refer to WF_Switch_WhatsNew_in_ACH_Configurator_v7.pdf for further details.

If you have any questions about existing Switch Flow update, please contact Alwan Support:

support@alwancolor.com

ACH/X with DALiM Basic Tool

Alwan ColorHub 6.x is compatible with Dalim Twist 7.5 (since build 5068) Basic tool.



What's new in ACH/X 6.0.0 rev 6436 since ACH/X 5.4.2

New Features

- Adobe PDF Library APDFL15.0.4PlusP2b: Improves PDF flattening and fixes some font issues
- Full support of Ghent PDF Output Suite 5.0
- File Comparator: compares original versus optimized file. If differences are detected file is put in Success or Error folder depending on user settings.
- "Kout greater or

equal to Kin": output Black will always be greater or equal to input Black regardless of the chosen black generation level. Available when input and output CMYK colorspaces are identical, and GCR or Dynamic Maximum Black separation.

- When spot color is converted to output device values, its reproduction ΔE is calculated and indicated in file PDF Report
- E-mail notification when input folder is not available

New Option

- Hydra Profiling® (paid option): available when ACH is activated using a dongle with Hydra Profiling® option or a time limited demo code

Improvements

- Improved color conversion of CMYK subsets when defined as device N elements
- Revisited Color Library

Dongles

Only Black dongles, with a valid URTS (Update and Remote Technical Support Program) are supported. Management of the new dongles must be done using AlwanLicenseManagerX (available from /Applications/Alwan Color Expertise/Utilities/AlwanLicenseManagerX.app)

Old Purple dongles must be upgraded to run ACH/X 6.x.

For more details please contact sales@alwancolor.com.

Note: ACH/X cannot be run in demo mode using time-limited license codes for more than 3 months. After 3 months, it will not be possible anymore to enter any time-limited license to activate the software.

Hardware and System Requirements

Windows:

- Windows 64-bit Operating System required (Microsoft® Windows® 7 Professional, 8 Professional, Windows Server 2008 R2, Server 2012)
- Standard or administrator user account.
- Minimum Hardware: Dual Core processor / 8 GB of RAM / 200 GB available hard disc space / 1600x900 screen resolution.
- Recommended Hardware: Quad-Core processor / 16 GB of RAM / 400 GB available hard disc space / 1920x1080 screen resolution.



Mac OS X:

- Mac OS X 10.9 – 10.10 –10.11–10.12 / Intel processors 64 bit required.
- Standard or administrator user account.
- Minimum Hardware: Dual Core processor / 8 GB of RAM / 200 GB available hard disc space / 1600x900 screen resolution.
- Recommended Hardware: Quad-Core processor / 16 GB of RAM / 400 GB available hard disc space / 1920x1080 screen resolution.

Upgrades

Installing the new ACH/X v6.x will automatically update and restore all settings from ACH/X v5.x or v4.x if it is already installed. No additional operation is needed to upgrade, for previous version (3.9.x for instance) please refer to available procedure in /AlwanColorHubX6xxrevxxxx/Documentations/HowToUpgrade_from_ACH_to_ACHX_rx.pdf.

ACH/X with Enfocus Switch

ACH/X v6 can be driven by Enfocus Switch 13 update 1 or later, please refer to WF_Switch_WhatsNew_in_ACH_Configurator_v7.pdf for further details.
If you have any questions about existing Switch Flow update, please contact Alwan Support: support@alwancolor.com

ACH/X with DALiM Basic Tool

Alwan ColorHub 6.x is compatible with Dalim Twist 7.5 (since build 5068) Basic tool.



What's new in ACH/X 5.4.2 rev 5598 since ACH/X 5.4.1

New Features

Adobe PDF Library

New Adobe PDF Library (APDFL 10.1.0PlusP5h): fixes some font and transparency flattening issues

Improvements

- Improved network files permissions for distant input folders
- Fix PDF reports Ink Savings figures which were randomly missing
- "Gamut Corner Points Mapping" limited to input RGB data

Dongles

Only Black dongles, with a valid URTS (Update and Remote Technical Support Program) are supported. Management of the new dongles must be done using AlwanLicenseManagerX (available from /Applications/Alwan Color Expertise/Utilities/AlwanLicenseManagerX.app)

Old Purple dongles must be upgraded to run ACH/X 5.x.

For more details please contact sales@alwancolor.com.

Note: ACH/X cannot be run in demo mode using time-limited license codes for more than 3 months. After 3 months, it will not be possible anymore to enter any time-limited license to activate the software.

Hardware and System Requirements

Windows:

- Windows 64-bit Operating System required (Microsoft® Windows® Vista, 7 Professional, 8 Professional, Windows Server 2008 R2, Server 2012)
- Standard or administrator user account.
- Minimum Hardware: Dual Core processor / 8 GB of RAM / 200 GB available hard disc space / 1600x900 screen resolution.
- Recommended Hardware: Quad-Core processor / 16 GB of RAM / 400 GB available hard disc space / 1920x1080 screen resolution.

Mac OS X:

- Mac OS X 10.7 – 10.8 – 10.9 – 10.10 / Intel processors 64 bit required.
- Standard or administrator user account.
- Minimum Hardware: Dual Core processor / 8 GB of RAM / 200 GB available hard disc space / 1600x900 screen resolution.
- Recommended Hardware: Quad-Core processor / 16 GB of RAM / 400 GB available hard disc space / 1920x1080 screen resolution.

Upgrades

Installing the new ACH/X v5.x will automatically update and restore all settings from ACH/X v4.x if it is already installed. No additional operation is needed to upgrade, for previous version (3.9.x for instance) please refer to available procedure in

/AlwanColorHubX5xxrevxxxx/Documentations/HowToUpgrade_from_ACH_to_ACHX_rx.pdf.



ACH/X with Enfocus Switch

ACH/X can be driven by Enfocus Switch 11 update 2 or later, with SWITCH Core Engine and Configurator Module. Alwan ColorHubX Switch Configurator v5 is compatible with Alwan ColorHub 5.4.x. It is available from Enfocus Website. Update can quickly be performed in Switch: Go in Help -> Manage configurations -> Alwan ColorHubX (version4) and click Update then Restart Switch Server. If you have any questions about existing Switch Flow update, please contact Alwan Support: support@alwancolor.com

ACH/X with DALiM Basic Tool

Alwan ColorHub 5.x is compatible with Dalim Twist 7.5 (since build 5068) Basic tool.



What's new in ACH/X 5.4.1 rev 4988 since ACH/X 5.4.0

New Features

Adobe PDF Library

New Adobe PDF Library (APDFL 10.1.OP4n): fixes some font issues

Improvements

- JPG resolution fix for JPG image file format when resolution is set in JFIF X/Y Density
- Minor UI fixes: OI filtering UI / Ink Consumption / DTAC
- Improved File Naming support when file name includes 2 periods

Dongles

Only Black dongles, with a valid URTS (Update and Remote Technical Support Program) are supported. Management of the new dongles must be done using AlwanLicenseManagerX (available from /Applications/Alwan Color Expertise/Utilities/AlwanLicenseManagerX.app)

Old Purple dongles must be upgraded to run ACH/X 5.x.

For more details please contact sales@alwancolor.com.

Note: ACH/X cannot be run in demo mode using time-limited license codes for more than 3 months. After 3 months, it will not be possible anymore to enter any time-limited license to activate the software.

Hardware and System Requirements

Windows:

- Windows 64-bit Operating System required (Microsoft® Windows® Vista, 7 Professional, 8 Professional, Windows Server 2008 R2, Server 2012)
- Standard or administrator user account.
- Minimum Hardware: Dual Core processor / 8 GB of RAM / 200 GB available hard disc space / 1600x900 screen resolution.
- Recommended Hardware: Quad-Core processor / 16 GB of RAM / 400 GB available hard disc space / 1920x1080 screen resolution.

Mac OS X:

- Mac OS X 10.7 – 10.8 – 10.9 – 10.10 / Intel processors 64 bit required.
- Standard or administrator user account.
- Minimum Hardware: Dual Core processor / 8 GB of RAM / 200 GB available hard disc space / 1600x900 screen resolution.
- Recommended Hardware: Quad-Core processor / 16 GB of RAM / 400 GB available hard disc space / 1920x1080 screen resolution.

Upgrades

Installing the new ACH/X v5.x will automatically update and restore all settings from ACH/X v4.x if it is already installed. No additional operation is needed to upgrade, for previous version (3.9.x for instance) please refer to available procedure in

/AlwanColorHubX5xxrevxxxx/Documentations/HowToUpgrade_from_ACH_to_ACHX_rx.pdf.



ACH/X with Enfocus Switch

ACH/X can be driven by Enfocus Switch 11 update 2 or later, with SWITCH Core Engine and Configurator Module. Alwan ColorHubX Switch Configurator v5 is compatible with Alwan ColorHub 5.4.x. It is available from Enfocus Website. Update can quickly be performed in Switch: Go in Help -> Manage configurations -> Alwan ColorHubX (version4) and click Update then Restart Switch Server. If you have any questions about existing Switch Flow update, please contact Alwan Support: support@alwancolor.com

ACH/X with DALiM Basic Tool

Alwan ColorHub 5.x is compatible with Dalim Twist 7.5 (since build 5068) Basic tool.



What's new in ACH/X 5.4.0 rev 4903 since ACH/X 5.3.0

New Features

Adobe PDF Library

New Adobe PDF Library (APDFL 10.1.OP4k): fixes some font issues

Queue Manager

Group check box activates or deactivates all queues inside a group

Spot Inks

Spot Ink demand can be set individually for each output ink

"Other Spot" TRC Adjustment applies chosen TRCA to spot colors that are not color managed

Improvements

- Unsharp Mask Threshold setting available in Output -> Advanced -> Image Enhancement
- Improved import of files when owner has no read/write permissions
- Updated FTP utility fixes some FTP import and export stability issues
- PDF and text reports name suffix restored to previous behaviour (_reportOPT instead of _reportOK)
- Web Interface Print Run can be edited simultaneously for different jobs
- HiFi dongle option is needed to choose custom Input Default Hifi profile. Without HiFi option, "Automatic Profile" is applied

Dongles

Only Black dongles, with a valid URTS (Update and Remote Technical Support Program) are supported.

Management of the new dongles must be done using AlwanLicenseManagerX (available from

/Applications/Alwan Color Expertise/Utilities/AlwanLicenseManagerX.app)

Old Purple dongles must be upgraded to run ACH/X 5.x.

For more details please contact sales@alwancolor.com.

Note: ACH/X cannot be run in demo mode using time-limited license codes for more than 3 months. After 3 months, it will not be possible anymore to enter any time-limited license to activate the software.

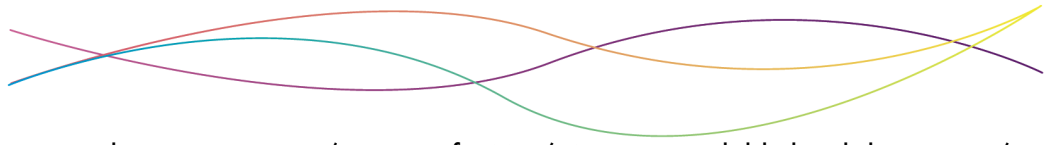
Hardware and System Requirements

Windows:

- Windows 64-bit Operating System required (Microsoft® Windows® Vista, 7 Professional, 8 Professional, Windows Server 2008 R2, Server 2012)
- Standard or administrator user account.
- Minimum Hardware: Dual Core processor / 8 GB of RAM / 200 GB available hard disc space / 1366x768 screen resolution.
- Recommended Hardware: Quad-Core processor / 16 GB of RAM / 400 GB available hard disc space / 1920x1080 screen resolution.

Mac OS X:

- Mac OS X 10.7 – 10.8 – 10.9 – 10.10 / Intel processors 64 bit required.
- Standard or administrator user account.
- Minimum Hardware: Dual Core processor / 8 GB of RAM / 200 GB available hard disc space / 1366x768 screen resolution.



- Recommended Hardware: Quad-Core processor / 16 GB of RAM / 400 GB available hard disc space / 1920x1080 screen resolution.

Upgrades

Installing the new ACH/X v5.x will automatically update and restore all settings from ACH/X v4.x if it is already installed. No additional operation is needed to upgrade, for previous version (3.9.x for instance) please refer to available procedure in /AlwanColorHubX5xxrevxxxx/Documentations/HowToUpgrade_from_ACH_to_ACHX_rx.pdf.

ACH/X with Enfocus Switch

ACH/X can be driven by Enfocus Switch 11 update 2 or later, with SWITCH Core Engine and Configurator Module. Alwan ColorHubX Switch Configurator v5 is compatible with Alwan ColorHub 5.4.x. It is available from Enfocus Website. Update can quickly be performed in Switch: Go in Help -> Manage configurations -> Alwan ColorHubX (version4) and click Update then Restart Switch Server. If you have any questions about existing Switch Flow update, please contact Alwan Support: support@alwancolor.com

ACH/X with DALiM Basic Tool

Alwan ColorHub 5.x is compatible with Dalim Twist 7.5 (since build 5068) Basic tool.



What's new in ACH/X 5.3.0 rev 4501 since ACH/X 5.2.0

New Features

Check for Updates

- Automatic or manual check for ACH/X updates:
Preferences -> General -> Check for Updates options
- Download and install the latest version available within your dongle URTS period.

Gamut Corner points

- Optimizes the color transformation of RGB images to maximize their color saturation on output device
Available from Output -> Purities -> RGB Only.

Spot Color Management

Advanced Spot Color Management :

- ACH/X includes the same Color Library as APS and APV
- Choose between PDF and Color Library Definition: Input -> Spot Color Default Definition
- Convert using PDF Alternate Color Space Values: restores ACH v3 "convert Spots to CMYK" purity option
- Improved color management of PDF with HiFi Profile

Please refer to ACH Manual part 3.3.2 for détails

Localization

- ACH can use localized language pack:
"Admin -> Import Localization File..." enables you to select *.qm translation package file

Improvements

- Minor User Interface Improvements
- Switch Configurator fixes for Reports and Proof files
- Reports and Proofs filenames (matching optimized file name, instead of original file name)
- Files will be processed according to the First In First Out policy.

Dongles

Only Black dongles, with a valid URTS (Update and Remote Technical Support Program) are supported.

Management of the new dongles must be done using AlwanLicenseManagerX (available from /Applications/Alwan Color Expertise/Utilities/AlwanLicenseManagerX.app)

Old Purple dongles must be upgraded to run ACH/X 5.x.

For more details please contact sales@alwancolor.com.

Note: ACH/X cannot be run in demo mode using time-limited license codes for more than 3 months. After 3 months, it will not be possible anymore to enter any time-limited license to activate the software.

Hardware and System Requirements

Windows:

- Windows 64-bit Operating System required (Microsoft® Windows® Vista, 7 Professional, 8 Professional, Windows Server 2008 R2, Server 2012)
- Standard or administrator user account.
- Minimum Hardware: Dual Core processor / 8 GB of RAM / 200 GB available hard disc space /



1366x768 screen resolution.

- Recommended Hardware: Quad-Core processor / 16 GB of RAM / 400 GB available hard disc space / 1920x1080 screen resolution.

Mac OS X:

- Mac OS X 10.7 – 10.8 – 10.9 – 10.10 / Intel processors 64 bit required.

- Standard or administrator user account.

- Minimum Hardware: Dual Core processor / 8 GB of RAM / 200 GB available hard disc space / 1366x768 screen resolution.

- Recommended Hardware: Quad-Core processor / 16 GB of RAM / 400 GB available hard disc space / 1920x1080 screen resolution.

Upgrades

Installing the new ACH/X v5.x will automatically update and restore all settings from ACH/X v4.x if it is already installed. No additional operation is needed to upgrade, for previous version (3.9.x for instance) please refer to available procedure in /AlwanColorHubX5xxrevxxxx/Documentations/HowToUpgrade_from_ACH_to_ACHX_rx.pdf.

ACH/X with Enfocus Switch

ACH/X can be driven by Enfocus Switch 11 update 2 or later, with SWITCH Core Engine and Configurator Module. Alwan ColorHubX Switch Configurator v5 is compatible with Alwan ColorHub 5.3.x. It is available from Enfocus Website. Update can quickly be performed in Switch: Go in Help -> Manage configurations -> Alwan ColorHubX (version4) and click Update then Restart Switch Server. If you have any questions about existing Switch Flow update, please contact Alwan Support: support@alwancolor.com

ACH/X with DALiM Basic Tool

Alwan ColorHub 5.x is compatible with Dalim Twist 7.5 (since build 5068) Basic tool.



What's new in ACH/X 5.2.0 rev 4170 since ACH/X 5.1.0

New Features

CMYK Output

- New "Clean Gray Axis" Purity: gray colors with chroma below a defined value will contain only K ink in the output separation

HiFi / Multicolor Output

- New "Preserve CMYK" Purity: CMYK only colors on the input remain CMYK only on the output
- New "No Complementary Inks" Purity: eliminates the use of complementary inks in the output separation when there is a risk of moiré
- New "Prefer HiFi C, M, Y, K": when Input HiFi color space includes CMYK, input PDF CMYK colors will be defined using the CMYK part of HiFi color space. Useful for repurposing Esko® Equinox® PDF
- New "Clean Gray Axis" Purity: gray colors with chroma below a defined value will contain only K (or darkest) ink in the output separation

Extended RGB and CMYK Input Gamuts

- New "Wide Gamut Standard RGB" / "Super Wide Gamut Standard RGB" profiles: can be chosen as default Input ICC Profiles to Saturate / Saturate More output colors
- New "Wide Gamut Standard CMYK" / "Super Wide Gamut Standard CMYK" profiles: can be chosen as default Input ICC Profiles to Saturate / Saturate More output colors

Improvements

- New Mac OS X Yosemite (10.10.x) Support
- Mac OS X Snow Leopard (10.6.x) is not supported anymore.
- Improved Shading Smoothness
- Improved Web Interface (Group displayed, Drag and Drop of file in a queue, direct download of Report/Success/Error/Original jobs, etc)
- Minor User Interface Improvements

Dongles

Only Black dongles, with a valid URTS (Update and Remote Technical Support Program) are supported. Management of the new dongles must be done using AlwanLicenseManagerX (available from /Applications/Alwan Color Expertise/Utilities/AlwanLicenseManagerX.app)

Old Purple dongles must be upgraded to run ACH/X 5.x.

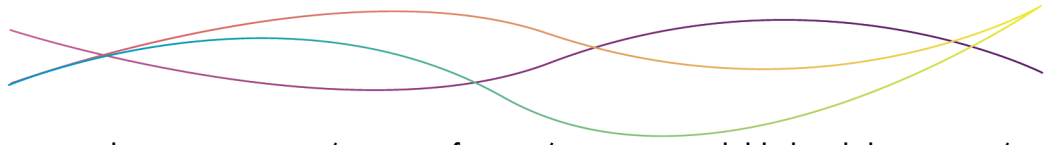
For more details please contact sales@alwancolor.com.

Note: ACH/X cannot be run in demo mode using time-limited license codes for more than 3 months. After 3 months, it will not be possible anymore to enter any time-limited license to activate the software.

Hardware and System Requirements

Windows:

- Windows 64-bit Operating System required (Microsoft® Windows® Vista, 7 Professional, 8 Professional, Windows Server 2008 R2, Server 2012)
- Standard or administrator user account.
- Minimum Hardware: Dual Core processor / 8 GB of RAM / 200 GB available hard disc space / 1366x768 screen resolution.



- Recommended Hardware: Quad-Core processor / 16 GB of RAM / 400 GB available hard disc space / 1920x1080 screen resolution.

Mac OS X:

- Mac OS X 10.7 – 10.8 – 10.9 – 10.10 / Intel processors 64 bit required.
- Standard or administrator user account.
- Minimum Hardware: Dual Core processor / 8 GB of RAM / 200 GB available hard disc space / 1366x768 screen resolution.
- Recommended Hardware: Quad-Core processor / 16 GB of RAM / 400 GB available hard disc space / 1920x1080 screen resolution.

Upgrades

Installing the new ACH/X v5.x will automatically update and restore all settings from ACH/X v4.x if it is already installed. No additional operation is needed to upgrade, for previous version (3.9.x for instance) please refer to available procedure in /AlwanColorHubX5xxrevxxxx/Documentations/HowToUpgrade_from_ACH_to_ACHX_rx.pdf.

ACH/X with Enfocus Switch

ACH/X can be driven by Enfocus Switch 11 update 2 or later, with SWITCH Core Engine and Configurator Module. Alwan ColorHubX Switch Configurator v4 is compatible with Alwan ColorHub 5.x. It is available from Enfocus Website. Update can quickly be performed in Switch: Go in Help -> Manage configurations -> Alwan ColorHubX (version3) and click Update then Restart Switch Server. If you have any questions about existing Switch Flow update, please contact Alwan Support: support@alwancolor.com

ACH/X with DALiM Basic Tool

Alwan ColorHub 5.x is compatible with Dalim Twist 7.5 (since build 5068) Basic tool.



What's new in ACH/X 5.1.0 rev 3907 since ACH/X 5.0.1

New Features

- New HiFi Separation option: GCR level can be chosen when using output HiFi profiles containing CMYK inks
- New Web interface: Allows the monitoring of Queues status, Jobs in progress and Done Jobs from any html browser
- New Premedia Edition: Enables "Use Output Profile Separation" for optimizations to any output color space
- New Static DVLP Option: Enables optimizations through Static DVLPs
- New Search functionality for Special Colors: Helps quickly finding a color in a large Color Library
- Processing Speed improvements: Local rasterization is quicker and can be processed on different cores
- New "Backup Settings Only..." : Allows to backup ACH/X settings without database, lighter and faster backups
- Minor User Interface fixes

Dongles

Only Black dongles, with a valid URTS (Update and Remote Technical Support Program) are supported. Management of the new dongles must be done using AlwanLicenseManagerX (available from /Applications/Alwan Color Expertise/Utilities/AlwanLicenseManagerX.app)

Old Purple dongles must be upgraded to run ACH/X 5.x.

For more details please contact sales@alwancolor.com.

Note: ACH/X cannot be run in demo mode using time-limited license codes for more than 3 months. After 3 months, it will not be possible anymore to enter any time-limited license to activate the software.

Hardware and System Requirements

Windows:

- Windows 64-bit Operating System required (Microsoft® Windows® Vista, 7 Professional, 8 Professional, Windows Server 2008 R2, Server 2012)
- Standard or administrator user account.
- Minimum Hardware: Dual Core processor / 8 GB of RAM / 200 GB available hard disc space / 1366x768 screen resolution.
- Recommended Hardware: Quad-Core processor / 16 GB of RAM / 400 GB available hard disc space / 1920x1080 screen resolution.

Mac OS X:

- Mac OS X 10.6 – 10.7 – 10.8 – 10.9 / Intel processors 64 bit required.
- Standard or administrator user account.
- Minimum Hardware: Dual Core processor / 8 GB of RAM / 200 GB available hard disc space / 1366x768 screen resolution.
- Recommended Hardware: Quad-Core processor / 16 GB of RAM / 400 GB available hard disc space / 1920x1080 screen resolution.



Upgrades

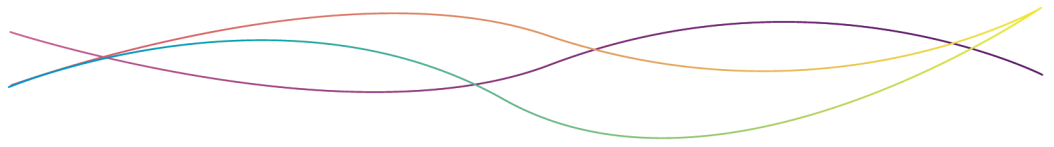
Installing the new ACH/X v5.0 will automatically update and restore all settings from ACH/X v4.x if it is already installed. No additional operation is needed to upgrade, for previous version (3.9.x for instance) please refer to available procedure in /AlwanColorHubX5xxrevxxxx/Documentations/HowToUpgrade_from_ACH_to_ACHX_rx.pdf.

ACH/X with Enfocus Switch

ACH/X can be driven by Enfocus Switch 11 update 2 or later, with SWITCH Core Engine and Configurator Module. Alwan ColorHubX Switch Configurator v4 is compatible with Alwan ColorHub 5.x. It is available from Enfocus Website. Update can quickly be performed in Switch: Go in Help -> Manage configurations -> Alwan ColorHubX (version3) and click Update then Restart Switch Server. If you have any questions about existing Switch Flow update, please contact Alwan Support: support@alwancolor.com

ACH/X with DALiM Basic Tool

Alwan ColorHub 5.x is compatible with Dalim Twist 7.5 (since build 5068) Basic tool.



What's new in ACH/X 5.0.1 rev 3575 since ACH/X 4.1

New Features

- New output colorspaces: RGB, Lab, Gray, CMYK (+Spot), HiFi (+Spot).
- New Alwan Multicolor engine: Higher color accuracy, higher ink savings, HiFi support.
- User interface improvements: Task Window has been redesigned and significantly enhanced.
- New Rasterization capabilities: Local flattening available for overprint sensitive, spot overprints, complex and normal transparencies.
- New Proof capabilities: Generate color managed raster file for softproof, raster file for hardproof or printed proof.
- New Dot Reproduction Limit option: Customize plates for specific processes such as Flexo.
- Fix queue issue that may appear when updating v3 to v4 to v5 (ACH 5.0.1).

Dongles

Only Black dongles, with a valid URTS (Update and Remote Technical Support Program) are supported. Management of the new dongles must be done using AlwanLicenseManagerX (available from /Applications/Alwan Color Expertise/Utilities/AlwanLicenseManagerX.app)
Old Purple dongles must be upgraded to run ACH/X 5.x .

For more details please contact sales@alwancolor.com.

Note: ACH/X cannot be run in demo mode using time-limited license codes for more than 3 months. After 3 months, it will not be possible anymore to enter any time-limited license to activate the software.

Hardware and System Requirements

Windows:

- Windows 64-bit Operating System required (Microsoft® Windows® Vista, 7 Professional, 8 Professional, Windows Server 2008 R2, Server 2012)
- Standard or administrator user account.
- Minimum Hardware: Dual Core processor / 8 GB of RAM / 200 GB available hard disc space / 1366x768 screen resolution.
- Recommended Hardware: Quad-Core processor / 16 GB of RAM / 400 GB available hard disc space / 1920x1080 screen resolution.

Mac OS X:

- Mac OS X 10.6 – 10.7 – 10.8 – 10.9 / Intel processors 64 bit required.
- Standard or administrator user account.
- Minimum Hardware: Dual Core processor / 8 GB of RAM / 200 GB available hard disc space / 1366x768 screen resolution.
- Recommended Hardware: Quad-Core processor / 16 GB of RAM / 400 GB available hard disc space / 1920x1080 screen resolution.

Upgrades

Installing the new ACH/X v5.0 will automatically update and restore all settings from ACH/X v4.x if it is already installed. No additional operation is needed to upgrade, for previous version (3.9.x for instance) please refer to available procedure in /AlwanColorHubX5xxrevxxxx/Documentations/How_to_Upgrade_from_ACH_to_ACHX_rx.pdf.



ACH/X with Enfocus Switch

ACH/X can be driven by Enfocus Switch 11 update 2 or later, with SWITCH Core Engine and Configurator Module. Alwan ColorHubX Switch Configurator v3 is compatible with Alwan ColorHub 5.0. It is available from Enfocus Website. For existing Switch Flow update, please contact Alwan Support:

support@alwancolor.com

ACH/X with DALiM Basic Tool

Alwan ColorHub 5.x is compatible with Dalim Twist 7.5 (since build 5068) Basic tool.



What's new in ACH/X 4.1 rev 2953 since ACH/X 4.0

New Features

- New Adobe PDF Library (APDFL 10.1.0PlusP2r): better support of PDF, PDF/X1-a and PDF/X4.
- User interface improvements: Compression gauge, Reset license menu, Statistics report.
- File handling improvements: PDF without file extension, hot folder hierarchy, scratch folder.

Dongles

Only Black dongles, with a valid URTS (Update and Remote Technical Support Program) are supported. Management of the new dongles must be done using AlwanLicenseManagerX (available from /Applications/Alwan Color Expertise/Utilities/AlwanLicenseManagerX.app)

Old Purple dongles must be upgraded to run ACH/X 4.1.0 .

For more details please contact sales@alwancolor.com.

Note: ACH/X cannot be run in demo mode using time-limited license codes for more than 3 months. After 3 months, it will not be possible anymore to enter any time-limited license to activate the software.

Hardware and System Requirements

Windows:

- Windows 64-bit Operating System required (Microsoft® Windows® Vista, 7 Professional, Windows Server2008 R2)
- Standard or administrator user account.
- Minimum Hardware: Dual Core processor / 8 GB of RAM / 200 GB available hard disc space / 1366x768 screen resolution.
- Recommended Hardware: Quad-Core processor / 16 GB of RAM / 400 GB available hard disc space / 1920x1080 screen resolution.

Mac OS X:

- Mac OS X 10.6 – 10.7 – 10.8 – 10.9 / Intel processors 64 bit required.
- Standard or administrator user account.
- Minimum Hardware: Dual Core processor / 8 GB of RAM / 200 GB available hard disc space / 1366x768 screen resolution.
- Recommended Hardware: Quad-Core processor / 16 GB of RAM / 400 GB available hard disc space / 1920x1080 screen resolution.

Upgrades

Detailed procedure is available in / AlwanColorHubX410revxxxx / Documentations /How_to_Upgrade_from_ACH_to_ACHX_rx.pdf.

ACH/X with Enfocus Switch

ACH/X can be driven by Enfocus Switch 11 update 2 or later, with SWITCH Core Engine and Configurator Module. Alwan ColorHubX Switch Configurator v3 is compatible with Alwan ColorHub 4.1. It is available from Enfocus Website. For existing Switch Flow update, please contact Alwan Support:

support@alwancolor.com



ACH/X with DALiM Basic Tool

Alwan ColorHub 4 is compatible with Dalim Twist 7.5 (since build 5068) Basic tool.



What's new in ACH/X 4.0 rev 2151 since ACH 3.9.10

New Features

- Cross-platform: identical color management results on Mac OS X and Windows platforms.
- New Alwan multicolor engine: higher color accuracy, higher ink savings, Updated Adobe BPC.
- New Adobe PDF Library (APDFL 10.1.0PlusP1y): better support of PDF, PDF/X1-a and PDF/X4.
- Higher productivity: 30% faster than previous versions, new queue priority option.
- Improved support for very large PDF files: for printing of posters, signage etc.

Dongles

Only Black dongles, with a valid URTS (Update and Remote Technical Support Program) are supported.

Management of the new dongles must be done using AlwanLicenseManagerX (available from /Applications/Alwan Color Expertise/Utilities/AlwanLicenseManagerX.app)

Old Purple dongles must be upgraded to run ACH/X 4.0.0 .

For more details please contact sales@alwancolor.com.

Note: ACH/X cannot be run in demo mode using time-limited license codes for more than 3 months. After 3 months, it will not be possible anymore to enter any time-limited license to activate the software.

Hardware and System Requirements

Windows:

- Windows 64-bit Operating System required (Microsoft® Windows® Vista, 7 Professional, Windows Server2008 R2)
- Standard or administrator user account.
- Minimum Hardware: Dual Core processor / 8 GB of RAM / 200 GB available hard disc space / 1366x768 screen resolution.
- Recommended Hardware: Quad-Core processor / 16 GB of RAM / 400 GB available hard disc space / 1920x1080 screen resolution.

Mac OS X:

- Mac OS X 10.6 – 10.7 – 10.8 – 10.9 / Intel processors 64 bit required.
- Standard or administrator user account.
- Minimum Hardware: Dual Core processor / 8 GB of RAM / 200 GB available hard disc space / 1366x768 screen resolution.
- Recommended Hardware: Quad-Core processor / 16 GB of RAM / 400 GB available hard disc space / 1920x1080 screen resolution.

Upgrades

Detailed procedure is available in / AlwanColorHubX400revxxxx / Documentation /How_to_Upgrade_from_ACH_to_ACHX_rx.pdf.



ACH/X with Enfocus Switch

ACH/X can be driven by Enfocus Switch 11 update 2 or later, with SWITCH Core Engine and Configurator Module. Alwan ColorHubX Switch Configurator v3 is compatible with Alwan ColorHub 4.0 . It is available from Enfocus Website. For existing Switch Flow update, please contact Alwan Support:

support@alwancolor.com

ACH/X with DALiM Basic Tool

Alwan ColorHub 4 is compatible with Dalim Twist 7.5 (since build 5068) Basic tool.